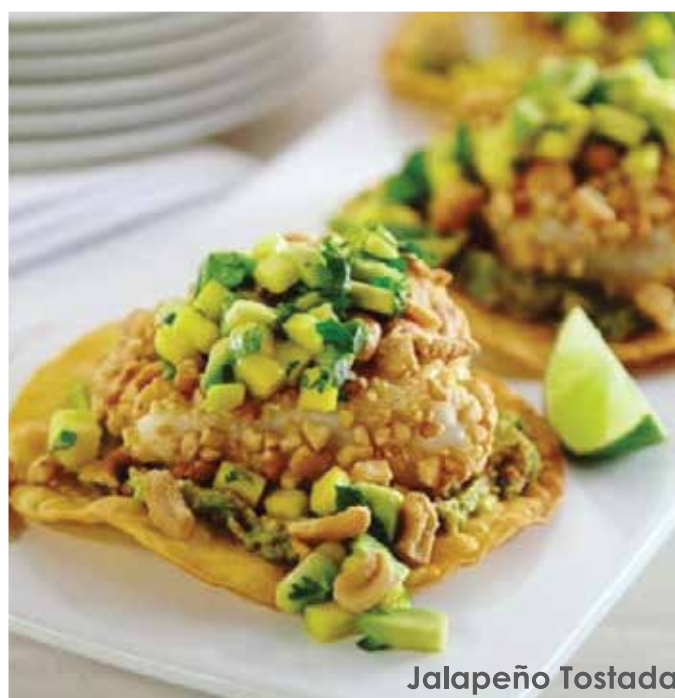




IMPRESS IN AN INSTANT  
WITH  
*Chef Xpress*™



Jalapeño Tostadas



# Quickly and Conveniently upscale menu applications with our Chef Xpress™ line.



- Azar is home to a wide range of sweet and savory coated nuts in whole, halved, and silvered formats.
- Variety of nuts and seeds in on-trend flavor profiles offer board appeal
- Turn appetizers, salads, main dishes, sides, soups and desserts into exciting menu items
- Popular Operators are using nuts to appeal to health conscious consumers, especially those looking for alternatives to animal proteins.

*AZAR NUTS add value to menu items across commercial & non-commercial channels of the Foodservice Industry.*



## Restaurants

Add eye-appeal, texture, and patron-pleasing flavors to salads, entrees, side dishes & desserts

- Cost Effective
- Convenient
- Customizable



## Bars & Lounges

Boost check averages with a selection of dishes & snacks featuring AZAR Nut Products

- 64% of Chefs say "grazing" or snacking is a hot trend<sup>1</sup>
- 49% of consumers are likely to try upscale bar bites<sup>2</sup>



## K-12

Effect change by offering cost-effective, flavorful, healthy solutions

- More schools are feeding students beyond classroom hours<sup>3</sup>
- AZAR Nuts are ideal for foodservice with kid-friendly flavors



## Hotels & Hospitality

Build Profits at every level of hotel operations

- 77% of consumers want healthy cuisine to be offered at hotels.<sup>4</sup>
- 55% of consumers consider food, drink & dining options when choosing a hotel.<sup>5</sup>

1. National Restaurant Association, What's Hot Culinary Forecast, 2016; 2. Datassential, TIPS, Winter 2015; 3. Foodservice Director, K-12 Census, March 2016;

4. Datassential, Creative Concepts: Hotels & Lodging, 2016; 5. Datassential, Creative Concepts: Hotels & Lodging, 2016

*Industry research shows that nuts are trending on today's menus.*

#### U.S. MENU PENETRATION



35.9%

ALMONDS



27.5%

PECANS



32.4%

WALNUTS



36.6%

PEANUTS

#### MENU PENETRATION GROWTH 1012-18



↑141.3%

PEPITAS



↑37.4%

SUNFLOWER SEEDS



↑20.8%

PISTACHIOS

• Data Essential, Menu Trends, 2018

#### ACHIEVEMENTS IN QUALITY

- SQF 2000 Edition 8 Certified with scores consistently in the high 90s
- Halal and Kosher Certified
- On-site laboratory with critical control measurement for product testing
- HACCP program with lot tracking, product recall and SPC implemented



Praline Chipotle Pecan Crusted Salmon

# Chef Xpress Products

AZAR #	ITEM DESCRIPTION	PACK SIZE	SHIP WEIGHT	CASE DIMENSIONS	CUBE	PALLET PATTERN
9672016	ALMONDS DICED, COCONUT	1/5 LB	5.3	12.25 x 8.563 x 4.563	.277	16 x 8 = 128
9672016	ALMONDS, DICED, ROASTED, COCONUT	1/5 LB	5.3	12.25 x 8.563 x 4.563	0.28	16 x 8 = 128
7112996	ALMONDS, DICED, ROASTED, UNSALTED	3/2 LB	6.2	11 x 8.5 x 6.25	0.34	18 x 6 = 108
2813198	ALMONDS, SLICED, HONEY ROASTED	3/2 LB	6.5	11.8 x 8.5 x 6.25	0.34	18 x 6 = 108
7112496	ALMONDS, NATURAL, SLICED, TOASTED	3/2 LB	6.6	11 x 8.5 x 6.25	0.34	18 x 6 = 108
7112896	ALMONDS, SLIVERED, TOASTED, UNSALTED	3/2 LB	6.6	11 x 8.5 x 6.25	0.34	18 x 6 = 108
9672012	MACADAMIAS, MEAL & PANKO	1/5 LB	5.3	11.875 x 8.187 x 3.937	0.22	16 x 8 = 128
9892096	PECAN, HALVES & PIECES, CRUNCHY	1/5 LB	5.4	12.25 x 8.563 x 4.563	0.28	16 x 8 = 128
9892096	PECAN HALVES & PIECES, GLAZED	1/5 LB	5.4	11.875 x 8.187 x 3.937	0.22	16 x 8 = 128
9892596	PECAN HALVES & PIECES, GLAZED	1/5 LB	27	18.25 x 12.25 x 8.25	1.07	7 x 5 = 35
9672014	PECAN PIECES & PANKO	3/2 LB	6.5	11 x 8.5 x 6.25	0.34	18 x 6 = 108
9892094	PECAN PIECES, GLAZED	1/5 LB	5.3	12.25 x 8.563 x 4.563	.277	16 x 8 = 128
2815098	PECAN PIECES, LARGE, CANDIED	3/2 LB	6.6	11 x 8.5 x 6.25	0.34	18 x 6 = 108
9620596	PECAN PIECES, LARGE, CANDIED	1/5 LB	5.3	11.875 x 8.187 x 3.937	0.22	16 x 8 = 128
9619995	PECAN PIECES, LARGE, SPICY	1/5 LB	5.4	11.875 x 8.187 x 3.937	0.22	16 x 8 = 128
9620996	PECAN PIECES, MEDIUM, CANDIED	1/5 LB	5.5	11.875 x 8.187 x 3.937	0.22	16 x 8 = 128
9883096	PECAN PIECES, MEDIUM, PRALINE	1/5 LB	5.5	11.875 x 8.187 x 3.937	0.22	16 x 8 = 128
9687096	PECAN PIECES, SPECIAL MEDIUM, CANDIED	2/12.5 LB	26	18.25 x 12.25 x 8.25	1.07	7 x 5 = 35
9671096	PEPITAS, ANCHO LIME	1/5 LB	5.5	11.875 x 8.187 x 3.937	0.22	16 x 8 = 128
7126900	PIGNOLIAS, MEDIUM, SHELLLED, TOASTED	3/2 LB	6.2	11 x 8.5 x 6.25	0.34	18 x 6 = 108
9672007	SUNFLOWER KERNEL, LEMON HERB	1/5 LB	5.3	12 x 8.5 x 4.5	0.28	16 x 8 = 128
9672006	SUNFLOWER KERNELS, SRIRACHA	1/5 LB	5.5	11.875 x 8.187 x 3.937	0.22	16 x 8 = 128
9620796	WALNUT HALVES & PIECES, CANDIED	1/5 LB	5.5	11.875 x 8.187 x 3.937	0.22	16 x 8 = 128
2813098	WALNUT HALVES & PIECES, HONEY MAPLE	3/2 LB	6.5	11 x 8.5 x 6.25	0.34	18 x 6 = 108
2816098	WALNUT PIECES, LARGE, CANDIED	3/2 LB	6.6	11 x 8.5 x 6.25	0.34	18 x 6 = 108
9616098	WALNUT PIECES, LARGE, CANDIED	2/12.5 LB	26	18.25 x 12.25 x 8.25	1.07	7 x 5 = 35
9622792	WALNUT PIECES, LARGE, KETTLE	1/5 LB	5.5	12 x 8.5 x 4.5	0.25	15 x 8 = 120

## AZAR FOOD SERVICE

1800 Northwestern Dr. | El Paso, TX 79912 | Sales 800.351.8178 x 1115 | Fax 915.877.1186 | [www.azarnutco.com](http://www.azarnutco.com)  
 For complete product information, other recipe ideas & additional items available, please contact us at [sales@azarnutco.com](mailto:sales@azarnutco.com)



2018 Azar Nut Company.  
 All Rights Reserved. 11/18