



SOUP

RECIPES



DESIGNATES A GLUTEN FREE PRODUCT

CONCENTRATE



FROZEN 3/4 LB. TRAYS

Cream Of Asparagus 81240
A flavorful soup made with tender asparagus and fresh cream. ZTF | **Contains: Soy & Wheat**

Cream of Broccoli 81241 Cream blended with bright green broccoli and delicate seasoning, finished with a dash of lemon. ZTF | **Contains: Soy, Milk, & Wheat**

■ **Golden Broccoli & Cheese** 81244 Smooth and creamy blend of American, Swiss, and Cheddar cheeses with fresh cream and lots of broccoli. ZTF | **Contains: Soy & Milk**

Chicken Brown Wild Rice 81220 Hearty cream soup loaded with brown and wild rice, chicken, carrots, and celery. ZTF | **Contains: Soy, Milk, & Wheat**

Chicken & Dumplings 81235 Hearty soup loaded with dumplings and chunks of chicken in thick home-style chicken gravy. ZTF | **Contains: Soy, Eggs, & Wheat**

Roasted Chicken Noodle 81238 Spoon-size curly broad egg noodles with a unique roasted-chicken flavor. Tender chicken chunks, carrots, celery, and onions in delicately seasoned chicken broth. ZTF | **Contains: Soy, Milk, Eggs, & Wheat**

Homestyle Chicken Noodle 81245 Lots of dumpling-like egg noodles, large chunks of chicken, carrots, celery, and onions offered in a mildly seasoned chicken broth. ZTF | **Contains: Eggs, Soy, & Wheat**

■ **Creole Chicken and Sausage Gumbo** 81246 Louisiana-style gumbo spiced with Old Bay and cayenne pepper. Garnished with diced tomatoes, rice, okra, chicken, and sausage in flavorful chicken broth. ZTF | **Contains: Soy**

Minestrone 81247 This Italian vegetable soup with penne pasta, tomatoes, carrots, kidney beans, potatoes, Italian green beans, spinach, celery, peas, and zucchini. ZTF | **Contains: Eggs, Milk, & Wheat**

New England Clam Chowder 81250 Classic with sweet clams and diced potatoes, celery in cream sauce. ZTF | **Contains: Soy, Milk, Shellfish (Mollusks & Clam,) & Fish (Cod & Tuna)**

French Onion 81251 Robust sweet onions simmered in hearty beef stock and topped with parsley. ZTF | **Contains: Soy**

Cream Of Potato 81252 Large dices of potato with tender pieces of carrots and celery, simmered with onions and fresh cream for unmatched flavor. ZTF | **Contains: Soy, Milk, & Wheat**

Pasta Fagioli 81253 A classic Italian soup filled with red beans and mini ziti pasta. Parmesan cheese adds to the broth's rich flavor, while a hint of bacon lends a slightly smoky taste. ZTF | **Contains: Soy, Eggs, Milk, & Wheat**

Vegetable Beef w/Barley 81260 Large chunks of lean beef, potatoes, barley, carrots and a bounty of 7 other vegetables simmered in delectable beef broth. ZTF | **Contains: Wheat**

V-8 Tomato Basil Bisque 81263 Tender chunks of tomatoes in a rich and creamy tomato broth lightly accented with basil. ZTF | **Contains: Milk & Wheat**

■ **Vegetarian Garden** 81268 A lighter soup with a medley of garden-fresh vegetables including celery, carrots, peas, onions, tomatoes & zucchini in a tomato broth. ZTF

Kickin' Crab & Sweet Corn 81043 A creamy chowder made with tender crab, sweet corn and green bell peppers, finished with brandy and a dash of Tabasco® Pepper Sauce. **Contains: Crustacean, Fish, Gluten, Milk, Wheat**

WHY FROZEN SOUPS?



Now more than ever, you need a low-prep product with a longer shelf life to get the job done while providing you with more flexibility, efficiency and satisfaction. Create great tasting sauce or use as speed scratch ingredients.

← SCAN BARCODE FOR MORE INFO

READY TO USE



RESERVE SOUPS

FROZEN 4/4 LB. POUCH

Creamy Broccoli & Cheddar Soup 81272 Creamy classic is full of broccoli florets and sharp Cheddar cheese with a satisfying hint of garlic. **Contains: Milk**

Aged White Cheddar & Cauliflower 78646 Tender cauliflower florets in a rich blend of sharp aged white cheddar, cream, onions and roasted garlic, rounded out with a hint of thyme. **Contains: Milk**

Chicken Tortilla 81232 Chicken, corn, black beans, peppers and Southwest spices come together in a tomato broth. **Contains: Soy**

Wicked Thai Chicken & Rice 81270 An exotic blend of chicken, rice, peppers and aromatic spices enhanced with the flavor of lemongrass, cabbage, shiitake mushrooms, sliced chives and rice. **Contains: Milk, Mollusk, Wheat, & Fish**

New England Clam Chowder 81209 Enhanced recipe with fresh cream paired with tender clams, diced potatoes, onions & green celery. **Contains: Milk, Wheat, Soy, & Fish (Anchovy)**

NEW **Italian Wedding** 81265 Acini di pepe pasta, tender meatballs, spinach, herbs and Parmesan cheese in a rich chicken broth. ZTF | **Contains: Milk, Soy, & Wheat**

Red Lentil Vegetable Soup 81266 Dark red lentils and diced tomatoes simmered in vegetable broth with onions, zucchini, spinach, smoked paprika and a splash of sherry wine. ZTF | **Contains: Wheat**

Lobster Bisque w/Sherry 81217 Laced with a touch of sherry, this bisque is made with lobster stock, fresh cream & real butter to echo the rich traditions of coastal Maine. **Contains: Milk, Wheat, Crustacean (Lobster) & Fish (Cod)**

Red Pepper & Smoked Gouda Bisque 81214 Velvety-rich bisque of pureed roasted red bell peppers, smoked and shredded Gouda, whole basil leaves & crushed garlic. Finished with fresh cream. **Contains: Milk, Wheat, & Soy**

Basil & Tomato Bisque 81049 Tomato & basil with a crushed-red-pepper attitude. A puree of California red vine-ripened tomatoes, onions & butternut squash in chicken stock, finished with roasted tomato & basil-infused oil & whipped with real heavy cream. **Contains: Milk, & Wheat**

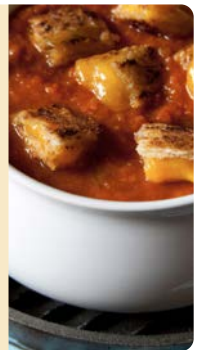
Mexican Street Corn 81037 A vegetarian soup that features sweet and roasted corn, cotija cheese and a traditional street corn spice blend with a hint of lime. ZTF | **Contains: Milk**

Creative Enhancements

Pour two different colors of thick soups side by side in front of patrons and swirl them together with a thin knife or skewer tip

OR

Premium Garnishes - Grilled cornbread with chili, Grilled cheese croutons with tomato soup, Lobster salad with lobster bisque



FROZEN 4/4 LB. POUCH

Harvest Butternut Squash 81302 Rich butternut squash simmered with cream and a blend of warm spices including ginger, cinnamon and nutmeg. ZTF | **Contains: Milk**

Baja Style Chicken Enchilada 81275 A colorful medley of vegetables, including diced tomatoes, corn, jalapeño peppers, red and green peppers, black beans and tender chunks of chicken deliver a slightly spicy, Mexican-inspired soup. ZTF | **Contains: Milk Soy**

Chicken Noodle 81219 Infused with a blend of herbs and succulent chicken for a premium soup with all the flavors of home. ZTF | **Contains: Eggs, Wheat, & Soy**

Loaded Baked Potato 81226 Bursting with hearty roasted potatoes, bacon bits and chives, this rich, creamy comfort soup will have patrons coming back for more. ZTF | **Contains: Milk**

Vegetable, Beef & Barley 81038 This hearty, warming soup is made with savory beef, sauteed vegetables and toasted barley slowly simmered in a rich tomato broth with aromatic spices. ZTF | **Contains: Soy & Wheat**



FRESH

Using naturally raised meats and freshly harvest vegetables
Stocks made from scratch | Always refrigerated, never frozen
Packed in 2/8 lb pouches

■ ***SEASONAL* Butternut Squash & Apple** 78482 A blend of puréed butternut squash, onions and handcrafted stock with caramelized Granny Smith apples and a pinch of fresh nutmeg. ZTF | **Contains: Milk**

■ **Broccoli Cheddar** 78501 Delicately pureed broccoli and sauteed onions in a rich blend of extra sharp cheddar cheese and light cream with a touch of white pepper. **Contains: Milk**

■ **Cauliflower & Cheddar** 78480 Tender cauliflower florets and sautéed onions in rich blend of sharp cheddar cheese, handcrafted vegetable stock and fresh cream, finished with lemon juice and sea salt. **Contains: Milk**

Chicken & Dumplings 78483 Slow-simmered chicken, sautéed onions, celery and carrots in a roux-thickened chicken stock with hearty dumplings, a dash of nutmeg and chopped parsley. **Contains: Wheat**

Chicken Noodle 78502 Tender slow simmered chicken, carrots, celery, onions and al dente mafalda noodles in a handcrafted chicken stock with a pinch of sea salt. ZTF | **Contains: Egg & Wheat**

Italian Wedding 78490 Perfectly seasoned meatballs and minature acini di pepe pasta in a handcrafted chicken stock with spianch, onions, olive oil and sauteed garlic. ZTF | **Contains: Eggs, Milk, & Wheat**

■ **Hungarian Mushroom** 78504 Delicately sauteed mushrooms in a rich, roux-thickened beef stock with light cream, Madiera wine, chopped dill, sour cream and a pinch of Hungarian paprika. ZTF | **Contains: Milk & Soy**

■ **Loaded Baked Potato** 78494 Tender potatoes, uncured bacon and cheddar cheese in a roux-thickened blend of beef and chicken stocks with sauteed garlic and chopped scallions. ZTF | **Contains: Milk**

Lobster Bisque 78493 Slow simmered North Atlantic lobster in a roux-thickened lobster stock with Spanish sherry, light cream and a pinch of white pepper. ZTF | **Contains: Milk, Fish (Cod,) Shellfish (Clam,) & Crustacean (Lobster)**

New England Clam Chowder 78498 Hand shucked sea clams in a rich, roux-thickened fish stock with tempered light cream, tender potatoes, rendered salt pork and sauteed onions. **Contains: Milk, Soy, Fish (Haddock, Anchovy & Cod,) & Shellfish (Clam)**

Shrimp & Sausage Gumbo 78477 Tender shrimp, Andouille sausage, vine-ripened tomatoes, sliced okra and white rice in a roux-thickened chicken stock with chopped parsley and a dash of pepper sauce. **Contains: Shellfish & Wheat**

■ **Split Pea Soup** 78492 Smoky uncured ham in a pureed blend of green split peas, onions, celery, carrots, and handcrafted chicken stock with a pinch of marjoram. ZTF

■ **White Chicken Chili With Cilantro** 78495 Slow simmered chicken and white beans in a roux-thickened chicken stock with tangy sour cream, green bell peppers, chopped cilantro and Southwestern spices. ZTF | **Contains: Milk**

Offering Soup As A Side or Flight

Get ahead of the curve and offer soup as a side to differentiate your business! Pair soup as the default side with a seasonal LTO. Forget those soggy fries for take-out and offer soup instead. Or offer soups as a substitute side for entrees on your menu. Make sure to call out soup on your menu if offering as a substitute side!

Consider offering soup flights, giving you the opportunity for incremental sales and guests the chance to try more seasonal flavors. Also, by offering soup flights that are a taste of the season, you can demonstrate your seasonal relevance.

-Campbell's Foodservice



FROZEN 4/4 LB. POUCH

■ ***SEASONAL* Butternut Squash & Apple** 81178 Simmered and pureed squash with red delicious apples and fresh rosemary sprigs. The soup is slightly thickened with French sourdough bread and a touch of light cream. ZTF | **Contains: Milk & Wheat**

■ ***SEASONAL*Spiced Pumpkin Bisque** 81174 Creamy and sweet pumpkin puree is gently blended with light cream, sweet potatoes and a delicate medley of spices. ZTF | **Contains: Milk**

Chicken & Poblano Pepper 81202 Creamy blend of diced chicken, light cream, red bell peppers, corn and black beans. Poblano peppers are added along with herbs and spices for a kick and finished with a hint of lime juice. ZTF | **Contains: Milk & Wheat**

Rosie's Chicken Noodle 81172 Prepared the old fashioned way with large tender chunks of white chicken meat in a wonderful chicken broth with plenty of vegetables and egg protein pasta. LOW CARB & LOW FAT | ZTF | **Contains: Egg & Wheat**

Southwest Corn Chowder 81177 Sweet corn, roasted poblano peppers, black beans, tender potatoes, cilantro and a kick of chipotle, all simmered in a deliciously creamy broth ZTF | **Contains: Milk & Wheat**

■ **French Onion** 81203 Delicious sweet onions simmered to perfection in a savory beef broth, accented with a touch of sherry wine to give this classic soup a unique twist. ZTF | **Contains: Milk**

Maine Lobster Bisque 81195 A perfect blend of minced sweet lobster meat simmered in rich cream and sherry. **Contains Milk, Wheat, & Crustacean (Lobster)**

■ **Manhattan Clam Chowder** 81198 A great tasting tomato-based chowder full of garden vegetables, hand-shucked clams, potatoes and a fine blend of herbs. ZTF | **Contains: Shellfish (Clam)**

New England Extreme Clam Chowder 81186 Made with sweet heavy cream, loaded with an EXTREME amount of hand-shucked sea clams, all-natural clam broth and tender potatoes. ZTF | **Contains: Milk, Shellfish (Clam,) & Fish (Pollock)**

■ **Portuguese Kale** 81196 Spicy Chourico sausage, tender kale, potatoes and red kidney beans are simmered in a flavorful chicken broth. ZTF | **Contains: Milk**

Shrimp & Roasted Corn Bisque 81190 Features tender shrimp and roasted sweet corn in delightful combination with red peppers, light cream and potato. ZTF | **Contains: Milk, Wheat, Soy, & Crustacean (Shrimp).**

Steak & Ale Chowder 81191 Ale enhances the unique flavor of this hearty chowder brimming with plentiful portions of tender beef, potatoes, onions and more in a creamy broth. ZTF | **Contains: Milk & Wheat**

KRAFT/HEINZ - FROZEN 4/8 LB. POUCHES

Timberline Chili 34100 Tomatoes and kidney beans combined with lean beef in a slightly spicy sauce. ZTF | **Contains: Soy & Wheat**

MAKE YOUR OWN



27899	Roasted Beef Base Premier	HghMkt.....	6/16 oz
27900	Beef Soup Base Low Sodium.....	Major	6/1#
75952	Beef Base Granular	Major	12/1#
75900	Beef Base Granular	Major	1/25#
75905	Beef Base	Major	1/30#
76000	Beef Base Paste Select	Major	12/1#
■ 27902	Beef Base Low Sodium NO MSG	Major	6/1#
76010	Beef Base	Major	2/8#
75982	Beef Base - Economy	Major	1/25#
■ 76021	Beef Base Ultimate	Knorr	6/1#
76025	Beef Base 095	Knorr	12/1#
76030	Beef Base No MSG Refrigerated	Major	6/1#
■ 76035	Beef Base Liquid Concentrate	Knorr	4/32 Oz
76205	Beef Base Paste Deluxe	Major	12/1#

61%

Sixty-one percent of global consumers are willing to try new items offered in foodservice, compared to 54% last year, according to Innova Market Insights. * Consumer Food Trends for Global Flavor Adventure, Innova Market Insights, February 29, 2024



27898	Roasted Chicken Base Premier.....HghMkt.....	6/16 oz
27925	Chicken Soup Base Low Sodium.....Major.....	6/1#
■27927	Chicken Base Low Sodium No MSG.....Major.....	6/1#
27951	Chicken Base Ultimate Low Sodium...Knorr.....	6/1#
76265	Chicken Base.....Major.....	1/30#
76270	Chicken Base Selected.....Major.....	12/1#
76280	Chicken Base.....Major.....	2/8#
76285	Chicken Base Paste Deluxe.....Major.....	12/1#
■76301	Chicken Base Ultimate.....Knorr.....	6/1#
76310	Chicken Base 095.....Knorr.....	12/1#
76225	Chicken Base - Granular Economy.....Major.....	12/1#
76260	Chicken Base - Granular Economy.....Major.....	1/25#
76255	Chicken Base - Economy.....Knorr.....	1/25#
76315	Chicken Base No MSG Refrigerated...Major.....	6/1#
■76320	Chicken Base Liquid Concentrate.....Knorr.....	4/32 oz
76335	Chicken Base Select.....Knorr.....	6/2#
76340	Chicken Base Franklin Colony.....Legout.....	1/30#
76470	Clam Base Refrigerated.....Major.....	6/1#
76355	Cream Soup Base Instant.....Legout.....	6/25 oz
76500	Smokey Ham Base.....Major.....	6/1#
76520	Lobster Base Refrigerated.....Major.....	6/1#
76540	Onion Base.....Major.....	12/8 oz
76555	Pork Base Ultimate No MSG.....Major.....	6/1#
76525	Seafood Base Refrigerated.....Major.....	6/1#
■76587	Turkey Base No MSG Refrigerated...Major.....	6/1#
27897	Sauteed Vegetable Premier Base.....HghMkt.....	6/16 oz
■27930	Vegetable Base Low Sdm No MSG...Major.....	6/1#
76622	Vegetable Base Refrig No MSG.....Major.....	6/1#
76625	Vegetable/Vegetarian Base Light.....Major.....	12/1#
■76631	Vegetable Base Ultimate.....Knorr.....	6/1#
■76635	Vegetable Base Liquid Concentrate...Knorr.....	4/32 oz
78629	Beef Broth.....Swanson.....	8/48 oz
78769	Chicken Broth.....Swanson.....	8/48 oz

VEGETABLE & GRAINS

96534	Chopped Spinach.....Chill Ripe....	12/2#
95801	5-Way Mixed Vegetable.....Uni Pro.....	12/2.5#
96342	Peas.....Sun Source	12/2.5#
94666	Parboiled Rice.....HghMkt.....	1/25#
■94725	100% Wild Rice K.....Ben's.....	2/5#
■94735	Basmati Rice K.....Ben's.....	2/5#
■94730	Arborio Rice Italy K.....Ambian.....	12/35 oz
■94745	Arborio Rice Italy K.....Ben's.....	2/5#
■94815	Long Grain & Wild Rice.....Ben's.....	6/36 oz
■94935	Whole Grain Brown Rice K.....Ben's.....	1/25#

PASTA

52533	100% Whole Grain Elbows Pasta.....Barilla.....	2/10#
52535	Elbows Pasta.....Cortona.....	2/10#
52796	Orecchiette Pasta.....Cortona.....	2/10#
52395	Ditalini Pasta K.....Zerega.....	1/20#
52745	1/4" Egg Noodle Pasta K.....Cortona.....	2/5#
52782	Orzo Pasta.....Zerega.....	2/10#
52915	Small Shells Pasta K.....Cortona.....	2/10#

CRACKERS

19425	Variety Bread Sticks K.....Clown.....	500/2 ct
	<i>Onion, sesame, garlic, plain</i>	
20075	Oyster Cracker All Natural K.....Westmn.....	150/.5 oz
20072	Oyster Cracker All Natural K.....Zesta.....	150/.5 oz
20300	Saltine Cracker K.....Zesta.....	500/2 ct
20160	Ritz Cracker K.....Ritz.....	300/2 ct

TAKE OUT



66481	8 oz Clear Soup Container w/Lid.....	Newsppg.....	240 ct
66483	12 oz Clear Soup Container w/Lid.....	Newsppg.....	240 ct
66486	16 oz Clear Soup Container w/Lid.....	Newsppg.....	240 ct
66491	32 oz Clear Soup Container w/Lid.....	Newsppg.....	240 ct

66545	8 oz Squat Paper w/Lid Container.....	Solo.....	250 ct
66547	12 oz Squat Paper w/Lid Container.....	Solo.....	250 ct
66549	16 oz Squat Paper w/Lid Container.....	Solo.....	250 ct
66551	32 oz Squat Paper w/Lid Container.....	Solo.....	250 ct

66617	8 oz Kraft Paper Container.....	Royal.....	20/25 ct
66614	12 oz Kraft Paper Container.....	Royal.....	20/25 ct
66616	16 oz Kraft Paper Container.....	Royal.....	20/25 ct
	Vented Lid for 8, 12 & 16 oz Container #66619		20/25 ct

67675	Black Soup Spoon IW.....	Comp.....	1000 ct
66680	5 oz Soup Paper Container - Champg..	GPI.....	20/50 ct
	Transparent lid #66676		10/100 ct
66682	8 oz Soup Paper Container - Champg..	GPI.....	20/50 ct
66689	12 oz Soup Paper Container- Champg..	GPI.....	20/50 ct
	White lid #66688		20/50 ct ct
66683	16 oz Soup Paper Container- Champg..	GPI.....	20/25 ct
66684	32 oz Soup Paper Container- Champg..	GPI.....	20/25 ct
	White lid for 16 & 32 oz #66687		10/50 ct

67683	Biodegradable Spoon.....	Vegware ...	1000 ct
65227	8 oz Bio Soup Container.....	Vegware ...	20/50 ct
	Lid for 8 oz Bio Soup Containter #66583		20/50 ct
65228	12 oz Bio Soup Container.....	Vegware ...	20/25 ct
66581	16 oz Bio Soup Container.....	Vegware ...	20/25 ct
	Lid for 12/16 oz Bio Soup Containter #66589		20/50 ct



DAIRY

24678	Milk Homogenized.....Hood.....	4/1 gal
24680	Milk Homogenized UHT K.....Hood.....	6/64 oz
24685	2% Milk UHT K.....Hood.....	6/64 oz
24687	1% Milk UHT.....Hood.....	6/64 oz
24677	Whole Milk Bag in Box.....Hood.....	1/5 gal
24639	18% Light Cream UHT.....PL.....	12/32 oz
24647	36% Heavy Cream UHT.....Farmland.....	12/32
24642	40% Heavy Cream UHT.....PL.....	12/32 oz
24332	Imported Grated Parmesan.....Mama Fran... 4/5 #	
24226	Grated Parmesan.....MamaFran... 200/3.5g	
24070	Shredded Mozzarella Cheese WM.....Cortona.....	4/5 #
23356	Feather Shred White Cheddar Mild....Grt Lakes.....	4/5 #
23355	Shredded Cheddar Mild.....Grt Lakes.....	4/5 #
23361	Feather Shred Cheddar/Mont Jack.....Grt Lakes.....	4/5 #

PROTEIN

39332	IQF Chopped Clams.....Sea Watch... 2/5#	
42024	Chopped Ocean Clams.....Dep Hrvst.....	12/51 oz
49830	Ocean Clam Juice.....Sea Watch... 12/46 oz	
57320	Sweet Italian Rope Sausage.....Prima.....	2/10#
53334	18/22 Layout Hickory Bacon.....Rangeline... 1/15#	
53336	18/22 Layout Applewood Bacon.....Rangeline... 1/15#	
53523	1/2 Piece Canadian Bacon.....Hatfield.....	4/4.5# avg
53350	Chef Pleaser 18/22 Layout Bacon.....Hatfield.....	1/15 #
53460	1/2" x 1/2" Raw Bacon P&E.....Smithfield.. 2/5 #	



Step your soup up a notch and add unique flavors with 1909 Heritage Farms Herbs & Spices

